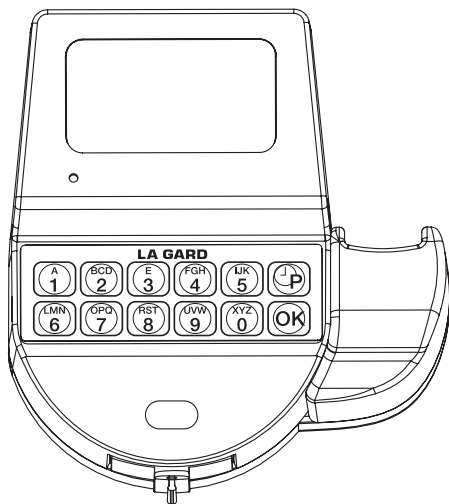


LOCK & LOGIC MODULE SETUP INSTRUCTIONS

SMARTPOINT/SMARTLINC II

This system is available with or without biometric identification ability. If using the SMARTLINC II, without biometric ability, please disregard any reference, in these instructions, to fingerprints. The functionality of the two systems are identical except for the use of fingerprints for identification.



AVAILABLE FEATURES

MASTER CODE 0 (Default set to 1-2-3-4-5-6-7-8)

MASTER CODE 1 (Default set to 8-7-6-5-4-3-2-1)

- Change Own Code
- Access to Master Menu
- Set Time and Date
- Set Time Lock & Special Events Periods
- Download or View Audit
- Enroll/Delete/Assign Locks
- Set System Operation Mode (Code, Fingerprint, etc)
- Set User Code Access Limit
- Add/Delete Users and Enroll Fingerprint
- Set Time Delay and Open Offset

MANAGER CODE

- Change Own Code
- Access to Manager Menu
- Set Time and Date
- Download or View Audit
- Assign Locks
- Set System Operation Mode (Code, Fingerprint, etc)
- Set User Code Access Limit
- Install/Delete/Enroll Fingerprint for Users
- Set Time Delay and Open Offset
- Set Immediate Time Lock
- Extend Open Period, if enabled

USER CODE

- Up to 98 users per system, including General Manager
- Open Lock
- Change Own Code
- Set Immediate Time Lock, if enabled
- Extend Open Period, if enabled

MULTIPLE LOCKS

- Up to Five

AUDIT

- Each lock will record last 4000 events. Logic Module can scroll last 1000 system events (all locks and users)

SYSTEM OPERATION MODE

- Finger only
- Finger + Code
- 2 Fingers
- 2 Finger + 2 Codes
- User Code only
- 2 User Codes

TIME DELAY

- Programmable on each lock
- Delay Period: 1 - 99 minutes
- Open Period: 1 - 19 minutes
- Two time delays (on different locks) can run at once

TIME DELAY OVERRIDE

- Ability to override time delay
- User(s) selected at time of setup

SILENT SIGNAL/DURESS ALARM

(Optional Alarm Box Required)

- Programmable on each lock
- Duress signal sent if last number of code(s) is entered using one number higher or one number lower (or Duress finger, as programmed).

REMOTE DISABLE

(Optional Alarm Box Required)

- Programmable on each lock

DUAL CODE

- Requires the presence of two users to open.

WRONG TRY PENALTY

- Four (4) consecutive invalid codes initiates five-minute delay period. Two additional invalid codes will begin another five-minute delay.

LOW BACKUP BATTERY WARNING

- Repeated audio and visual signal (LCD readout and repeated beeping) during opening indicates back-up battery is low and should be replaced.

AUDIO AND VISUAL SIGNAL

- Double signal (LCD readout and unit beeps) indicates entry is valid or accepted
- Triple signal indicates invalid or not accepted

TIME LOCK

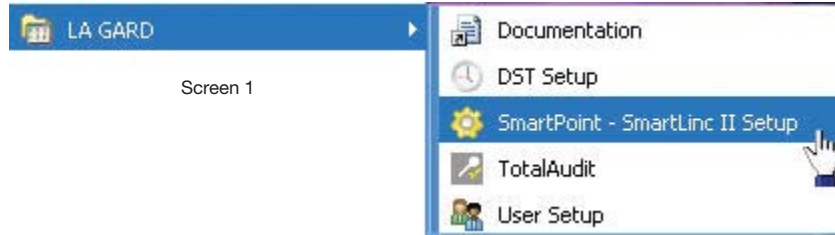
- Two Time Lock periods are available for set-up
- Selectable for each lock - Time Lock 1, 2 or None
- Standard Week (up to 4 open periods per day)
- Special Events (up to 20 close periods programmable by day and month; i.e., January 1, July 4)
- Immediate Time Lock (from now until next available open period)
- Time Lock Open Period Extension (Max. two (2) hours), if enabled

SYSTEM RECOMMENDATION

- It is recommended to install the SMARTPOINT software on a PC or Laptop running Windows® XP or higher

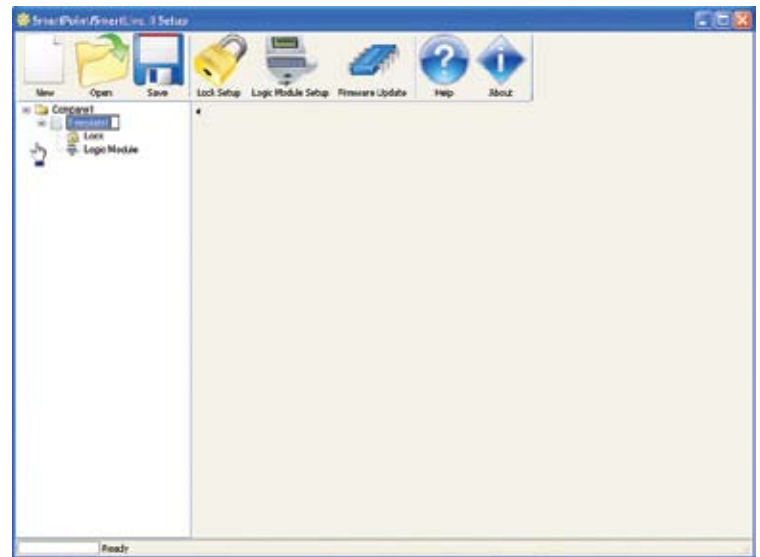
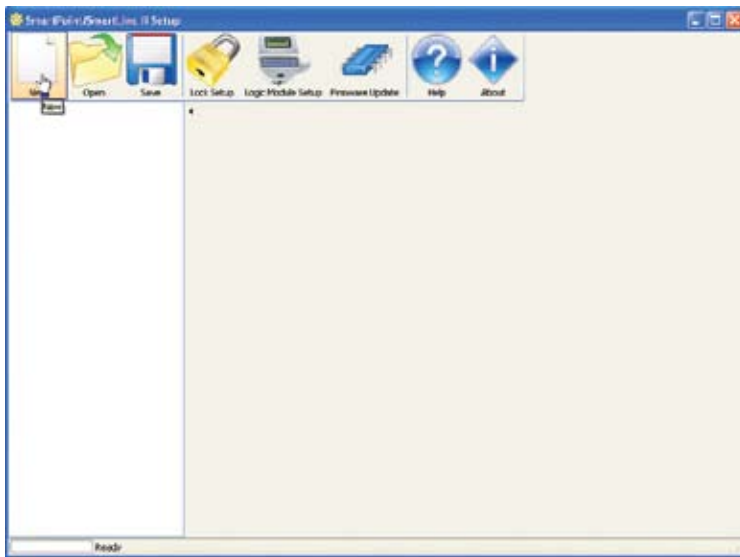
Opening SMARTPOINT Set-up Software

Once all of the software has been installed on the computer, it is time to begin setting up the Logic Module and lock(s). Open the set-up software. Using either windows explorer or the START button, find the LA GARD folder on the hard drive. Within the LA GARD folder there is a file labeled SmartPoint SmartLinc II Setup (see screen 1). Click on the icon to open the program.



SMARTPOINT Set-up Software

The opening window of the set-up software allows the choice of **New** (for a new set-up), **Open** (to open existing set-up), **Firmware Update** (to update or reset firmware in either the lock or the Logic Module), **Help** and **About** (see screen 2).



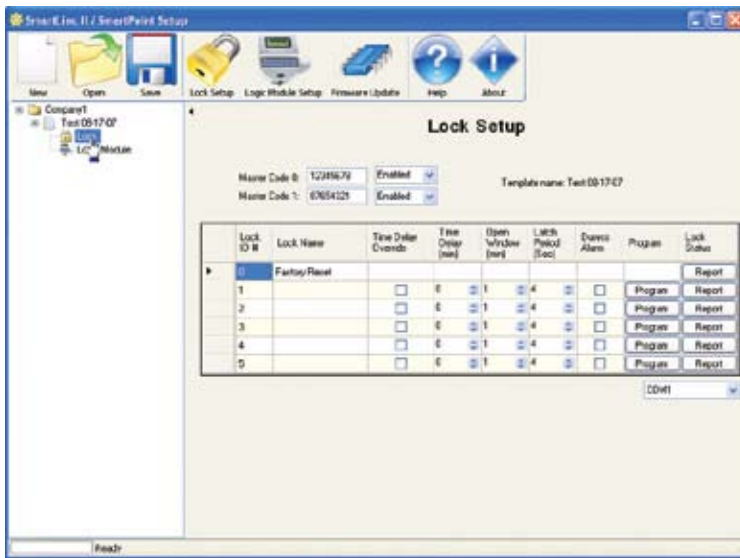
When the **New** button is selected a window will appear allowing for a new set-up for both locks and logic module (see screen 3). In this window the company name may be changed (see screen 4), and the template name may be changed (see screen 5). Additional company set-ups may be added to this page and saved.



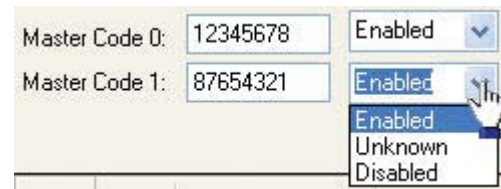
LOCK SET-UP

To set-up the locks, click on the **Lock Setup** button at the top of the screen or the lock icon on the left side in the tree (see screen 6). A window with the default configuration will appear (see screen 6). In this window select the features to be enabled on the locks.

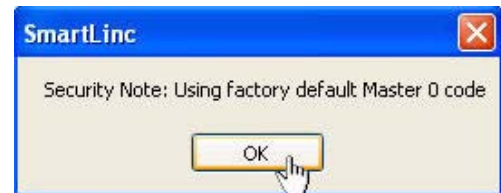
- The SMARTPOINT system has the ability to enroll two separate Master Codes. Master Code 0 must always be enrolled, but Master Code 1 may be selected as Disabled (see screen 7). New codes may be entered on this screen as well for setup in the locks. If new codes are not entered, when sending the setup to the lock a window will pop-up with a security reminder that these codes are set to default (see screen 8). Codes may be changed at the Logic Module as well.
- From the left hand column select the lock ID for the lock to be programmed. It is recommended to mark the lock itself with its ID number.
- In this window, it is possible to get the status of the lock. If the locks are in set-up mode, select the **Lock ID to Zero (0)** row then click the **REPORT** button and the end of the row. If an error message is received, the lock has probably already been set up (see screen 9). If the locks have already been set up, select the appropriate Lock ID and click the **REPORT** button (see screen 10).
- Information regarding the lock may be added in the **Lock Name** column. This would include serial numbers or placement information. The field is alpha-numeric.
- The lock may be set with the **Time Delay Override** feature. This will allow Users enabled with Time Delay Override to override the Time Delay period in order to access the safe.
- Time Delay open window and delay times may be set-up in this window or from the Logic Module.
- The Latch period may be set between 1 and 10 seconds with a default of 4. This refers to the length of time the solenoid will fire allowing the bolt to open. Example: If set to 4 seconds, a user would have 4 seconds to open the safe door after their code had been entered.
- The lock can be set for the Duress feature. This requires the use of a battery alarm box with an outside alarm company hook-up.
- Once all of the features for this lock have been selected, save and name the setup to a file for later use. If a file has already been saved, it may be opened from this window as well (see screen 11).



Screen 6



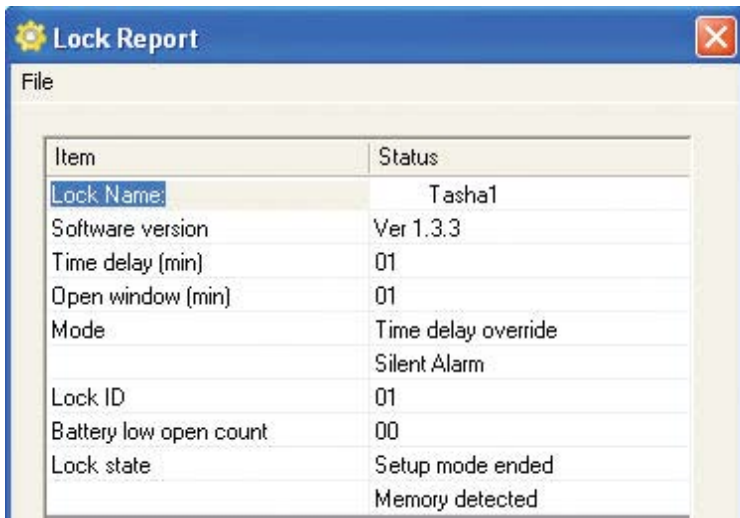
Screen 7



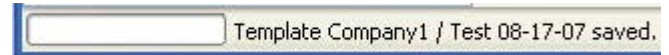
Screen 8



Screen 9



Screen 10



Screen 11

COM Port Set-up

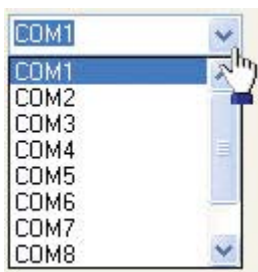
In order to send programming to the locks or Logic Module the correct COM port must be selected. Select the appropriate COM port from the Menu. The default is COM 1 (see screen 12). COM ports 1 through 10 are selectable, otherwise type in the correct COM port name. **Note: If you do not know which COM port to use, check the computer's device manager.**

SENDING SET-UP TO THE LOCK

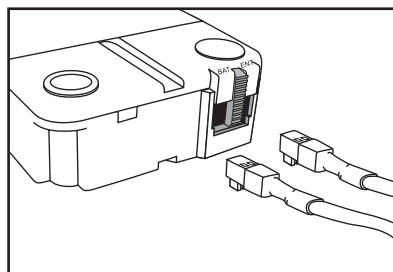
This function requires the use of the Programming Assembly, Lock Cable and Serial Interface (P/N 2034).

1. Connect power to the lock via the Logic Module, AC Power Adapter or small/large battery box through the port on the lock marked BAT. Quality alkaline batteries such as Energizer e2 Titanium or Duracell Ultra 9-Volt are recommended (see drawing 1).
2. Plug Interface and cable into PC.
3. Plug the 43098 cable into the lock through the port on the lock marked ENT.
4. Confirm the lock ID for the lock to be programmed. It is a good idea to mark the lock itself with its ID number.
5. In the column for the lock to be programmed, press the **SEND** button on the software.
 - If the COM port has been incorrectly set, an error message will appear (see screen 13). Return to the setup window (see screen 6) and reset the COM port to the correct one. **Note: If you do not know which COM port to use, check the computer's device manager.**
 - If one or more of the cables isn't properly connected an error message will appear. Check all connections and try again.
6. Once set-up is complete a new window will open showing LOCK SETUP COMPLETE (see screen 14).
7. Repeat steps 3 - 6 for each lock to be programmed with this configuration.

NOTE: If the computer does not have a serial port, a serial to USB Adapter will be required.



Screen 12



Drawing 1



Screen 13



Screen 14

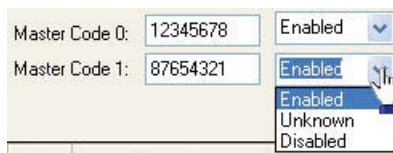
LOGIC MODULE SETUP

To set-up the logic module, click on the **Logic Module Setup** button at the top of the screen or the Logic Module icon on the left side in the tree (see screen 15). A window with the default configuration will appear. In this window select the features to be enabled on the Logic Module.

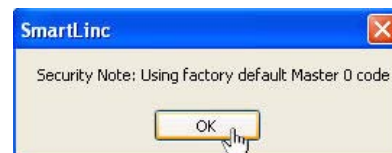
- The SMARTPOINT system has the ability to enroll two separate Master Codes. Master Code 0 must always be enrolled but Master Code 1 may be selected as Disabled (see screen 16). New codes may be entered on this screen as well for setup in the Logic Module. The codes entered must match the codes that were sent via the setup to the locks. If new codes are not entered, when sending the setup to the lock a window will pop-up with a security reminder that these codes are set to default (see screen 17).
- Select the **Product Type**, whether the system will be set up as a SMARTLINC II - without biometric reader - or SMARTPOINT - with biometric reader (see screen 18).
- Operation Mode offers multiple options for accessing the system. The system default is User Code Only but offers options for Code plus Fingerprint and Fingerprint Only. All three of these features are also available with Dual Users (see screen 19).



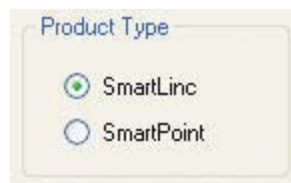
Screen 15



Screen 16



Screen 17



Screen 18



Screen 19

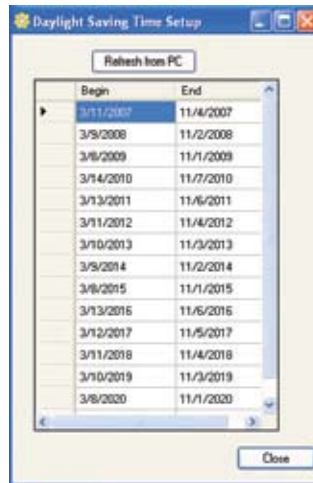
- The number of fingerprints to be stored per user will determine the number of users available on the system. If only 1 fingerprint per user is stored then the number of users is 100. If 2 fingerprints per user are stored the number of users is 50 and if 3 fingerprints (the maximum for the system) are stored then the number of users will be 33. The number of users may be set lower.
- **Open Extension** is not selected by default. If the box is left unchecked, the Open Extension Time Menu on the Logic Module will not be operational. This feature **MUST** be selected at the time of set-up and is not available for selection at the Logic Module level. Checking the box allows the Manager and/or Users (as selected in the next option) to access Time Lock Open Extension and Immediate Time Lock via the Time Menu on the Logic Module. Those who have access can then extend the Time Lock Open Period in 30 minute increments (but no more than two hours or four (4) 30 minute increments), or set the unit into Immediate Time Lock (not to open again until the next open Time Lock window).
- Time Menu Access allows you to select whether both the Manager and the Users or the Manager only will have access to the Time Menu (see screen 20).
- If the system will be set up in a place where Daylight Savings Time is observed, check the **Observed** box (see screen 21). There is a default Daylight Savings Time setup, however, the dates can be changed by clicking the **View/Edit** button (see screen 22).
- Multiple Time Lock periods are available. For a different Time Lock period to apply to a specific lock, mark the circle for either Time Lock Set 1 or Time Lock Set 2. The locks enrolled in the system may be set to Time Lock Set 1, Set 2 or No Time Lock (24/7) (see screen 23).
- By clicking the **View/Edit Time Lock Schedule** button, Time Lock and Special Events may be entered, saved and sent to the Logic Module.
- Once all of the features for this lock have been selected, save and name the set-up to a file for later use. If a file has already been saved, it may be opened from this window as well by selecting **OPEN** then navigating to the saved file.
- Information on the Logic Module may also be accessed from this screen. When the **Get Status** button at the bottom of the screen is clicked, the system will return information on the firmware version contained in the Logic Module, if the Logic Module is connected and PC Link is enabled (see screen 24 and 25).



Screen 20



Screen 21



Screen 22



Screen 23



Screen 24



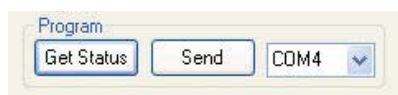
Screen 25

SENDING SET-UP TO THE LOGIC MODULE

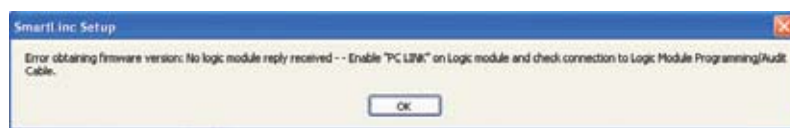
This function requires RS232 Serial Cable (P/N 2041)

1. Connect power to the Logic Module via the AC power Adapter. If not available, use alternate 9V battery as a temporary power source. Quality alkaline batteries such as Energizer e2 Titanium or Duracell Ultra 9-Volt are recommended.
2. Plug Interface and cable into PC.
3. Plug the 2041 cable into the Logic Module through the port on the keypad.
4. Press any key to power up SMARTPOINT.
 - Display will show **ENTER CODE**.
5. Hold down **zero** until the display shows **MASTER CODE, X-X-X-X-X-X-X**.
6. Enter the **MASTER** code.
7. Press the **P** button four (4) times to select PC Link; the Logic Module display will show **PC LINK**. Press the **OK** button to start communication with the PC, the Logic Module display will show **PC LINK, ENABLED**.
8. Press the **SEND** button on the software (see screen 26).
 - If the COM port has been incorrectly set, an error message will appear. Return to the setup window and re-set the COM port to the correct one. **Note: If you do not know which COM port to use, check the computer's device manager.**
 - If one or more of the cables isn't properly connected an error message will appear (see screen 27). Check all connections and try again.
9. During the transfer of the setup file, on the lower left side of the screen the status bar will show the information being downloaded (see screen 28).
 - In order to exit from PC Link, press the **P** button seven (7) times. When the screen reads **Do you want to QUIT?**, press the **OK** button to exit.

NOTE: If the computer does not have a serial port, a serial to USB Adapter will be required.



Screen 26



Screen 27



Screen 28

TIME LOCK SET-UP

To set-up Time Lock, click on the **View/Edit Time Lock Schedule** button on the opening screen of the Logic Module setup (see screen 15). A window with the default configuration will appear (see screen 29). This window allows the set-up of **Standard Week** and **Special Events Time Lock**. It is possible to set up two different Time Lock periods.

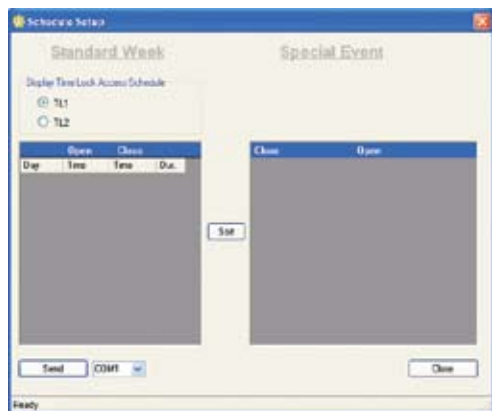
STANDARD WEEK

1. Select **TL 1**.
 - By right clicking the cursor in the gray box in the Standard Week screen, select **Add**, **Delete** or **Delete All** (see screen 30).
2. Select **Add** to set up the first Time Lock period.
 - Clicking in the Day box will bring a drop down menu for selecting the day of the week for the Time Lock period (see screen 31).
3. To enter the Open time, highlight the Time box in the Open area and enter the time using a 24 hour clock (see screen 32).
4. To enter the Close time, highlight the Time box in the Closed area and enter the time using a 24 hour clock.
 - Once the first day's time values have been entered, right click on first time values and select **Complete the Week** (see screen 33).

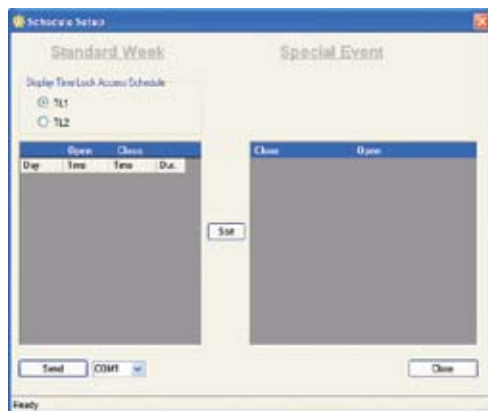
NOTE: If the choice is made to not have the rest of the week completed automatically, enter daily Time Lock values. Press the sort button to sequence records by day.

5. Save this Time Lock configuration as Time Lock 1 and the company name.
6. Select TL 2 and repeat steps 2 - 5, if you wish to set a lock to a different open and closed schedule from TL 1.

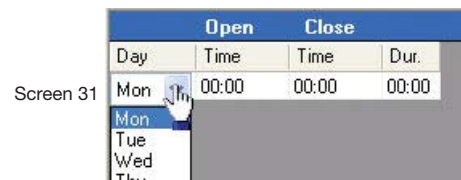
CAUTION! Any day NOT COMPLETED will be considered a day in Time Lock and the units will be UNAVAILABLE on that day!



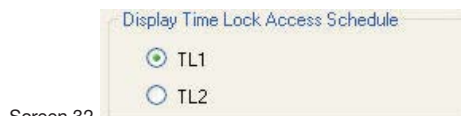
Screen 29



Screen 30



Screen 31



Screen 32



Screen 33



TIME LOCK SET-UP EXAMPLES

- Lock available 7 days a week during business hours (see screen 34). In this example business hours are 8am to 8pm 7 days a week.
- Lock available 6 days a week during business hours (see screen 35). In this example business hours are 8am to 8pm 6 days a week, closed on Sunday.
- Lock set for multiple time lock periods in one day (see screen 36). This example is set for 5 days, closed Saturday and Sunday.
- Lock set for opening on one day and closing early next morning, re-opening the same day (see screen 37).

	Open	Close	
Day	Time	Time	Dur.
Mon	08:00	20:00	12:00
Tue	08:00	20:00	12:00
Wed	08:00	20:00	12:00
Thu	08:00	20:00	12:00
Fri	08:00	20:00	12:00
Sat	08:00	20:00	12:00
Sun	08:00	20:00	12:00

Screen 34

	Open	Close	
Day	Time	Time	Dur.
Mon	08:00	20:00	12:00
Tue	08:00	20:00	12:00
Wed	08:00	20:00	12:00
Thu	08:00	20:00	12:00
Fri	08:00	20:00	12:00
Sat	08:00	20:00	12:00

Screen 35

	Open	Close	
Day	Time	Time	Dur.
Mon	06:00	08:00	02:00
Mon	18:00	20:00	02:00
Tue	06:00	08:00	02:00
Tue	18:00	20:00	02:00
Wed	06:00	08:00	02:00
Wed	18:00	20:00	02:00
Thu	06:00	08:00	02:00
Thu	18:00	20:00	02:00
Fri	06:00	08:00	02:00
Fri	18:00	20:00	02:00

Screen 36

	Open	Close	
Day	Time	Time	Dur.
Mon	08:00	23:59	15:59
Tue	00:01	01:00	00:59
Tue	08:00	23:59	15:59
Wed	00:01	01:00	00:59
Wed	08:00	23:59	15:59
Thu	00:01	01:00	00:59
Thu	08:00	23:59	15:59
Fri	00:01	23:59	23:58
Fri	08:00	23:59	15:59
Sat	00:01	01:00	00:59

Screen 37

SENDING TIME LOCK SET-UP TO THE LOGIC MODULE

This function requires RS232 Serial Cable (P/N 2041)

1. Connect power to the Logic Module via the AC power Adapter. If not available, use alternate 9V battery as a temporary power source. The use of Quality Energizer e2 Titanium or Duracell Ultra 9-Volt alkaline batteries is recommended.
2. Connect 2041 cable to PC and open SMARTPOINT Set-up software.
3. Plug the 2041 cable into the Logic Module through the port on the keypad.
4. Open the correct file for the Time Lock period (1 or 2) that will be downloaded to this lock.
5. Press any key to power up SMARTPOINT
 - Display will show **ENTER CODE**.
6. Hold down **zero** until the display shows **MASTER, X-X-X-X-X-X-X**.
7. Enter the **MASTER** code.
8. Press the **P** button four (4) times to select PC Link. The Logic Module display will read **PC LINK**. Press the **OK** button to start communication with the PC. The Logic Module display will read **PC LINK, ENABLED**.
9. Press the **SEND** button on the software (see screen 38).
 - If the COM port has been incorrectly set, an error message will appear. Return to the setup window (see screen 38), and reset the COM port to the correct one. **Note: If you do not know which COM port to use, check the computer's device manager.**
 - If one or more of the cables isn't properly connected an error message will appear (see screen 39). Check all connections and try again.
10. During the transfer of information on the lower left side of the screen the status bar will show the information being downloaded (see screen 40).
11. Once setup is complete a new window will open showing **TIME SETUP SENT** (see screen 41).
 - In order to exit from PC Link, press the **P** button seven (7) times. When the screen reads **Do you want to QUIT?**, press the **OK** button to exit.

NOTE: If the computer does not have a serial port, a serial to USB Adapter will be required.



Screen 38



Screen 39



Screen 40



Screen 41

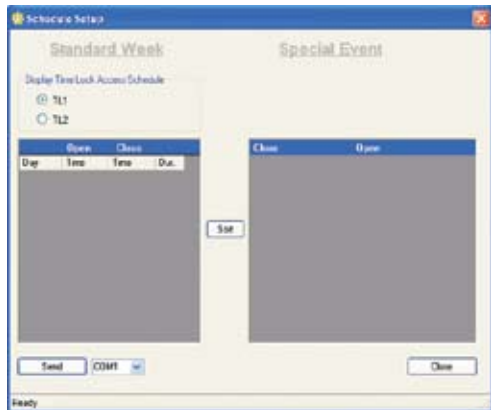
SPECIAL EVENTS SET-UP

To set-up Special Events, click on the **View/Edit Time Lock Schedule** button on the opening screen of the Logic Module setup (see screen 15 on page 4). A window with the default configuration will appear (see screen 42).

SPECIAL EVENTS

- By right clicking with the cursor in the first line on the Special Events screen, select **Add**, **Delete** or **Delete All** (see screen 43).
- Select the first box and select **Add** to set up the first Special Event period. Select the correct Day and Date (1, July) from the drop down calendar for the Closed Time, then select the correct Day and Date from the drop down calendar for the Open Time (see screen 44).
- Up to Twenty Special Events may be added for each year.

NOTE: Special Events will repeat each year on that Calendar date with the exception of Floating Holidays, i.e. Thanksgiving, Labor Day, etc.



Screen 42



Screen 43



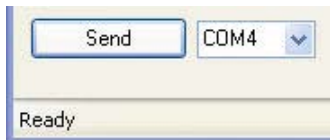
Screen 44

SENDING SPECIAL SET-UP TO THE LOGIC MODULE

This function requires RS232 Serial Cable (P/N 2041)

1. Connect power to the Logic Module via the AC power Adapter. If not available, use alternate 9V battery as a temporary power source. The use of Quality Energizer e2 Titanium or Duracell Ultra 9-Volt alkaline batteries is recommended.
2. Connect 2041 cable to PC and open SMARTPOINT Setup software.
3. Plug the 2041 cable into the Logic Module through the port on the keypad.
4. Open the correct file for the Time Lock period (1 or 2) that will be downloaded to this lock.
5. Press any key to power up SMARTPOINT
 - Display will show **ENTER CODE**.
6. Hold down **zero** until the display shows **MASTER, X-X-X-X-X-X-X**.
7. Enter the MASTER code.
8. Press the **P** button four (4) times to select PC Link. The Logic Module display will show **PC LINK**. Press the **OK** button to start communication with the PC. The Logic Module display will show **PC LINK, ENABLED**.
9. Press the **SEND** button on the software (see screen 45).
 - If the COM port has been incorrectly set, an error message will appear. Return to the setup window (see screen 45), and reset the COM port to the correct one. **Note: If you do not know which COM port to use, check the computer's device manager.**
 - If one or more of the cables isn't properly connected an error message will appear (see screen 46). Check all connections and try again.
10. During the transfer of information on the lower left side of the screen the status bar will show the information being downloaded.
11. Once setup is complete a new window will open showing **TIME SETUP SENT** (see screen 47).
 - In order to exit from PC Link, press the **P** button seven (7) times. When the screen reads **Do you want to QUIT?**, press the **OK** button to exit.

NOTE: If the computer does not have a serial port, a serial to USB Adapter will be required.



Screen 45



Screen 46



Screen 47

USER SET-UP

Since the SMARTPOINT system offers up to 100 users there is a separate software program to manage the users and enroll them into the system. To enroll users via the PC, open the SMARTLINC/SMARTPOINT User setup program on the PC.

The USB Fingerprint Reader must be plugged into the PC. (For information on installing this hardware, please refer to the software installation guide.

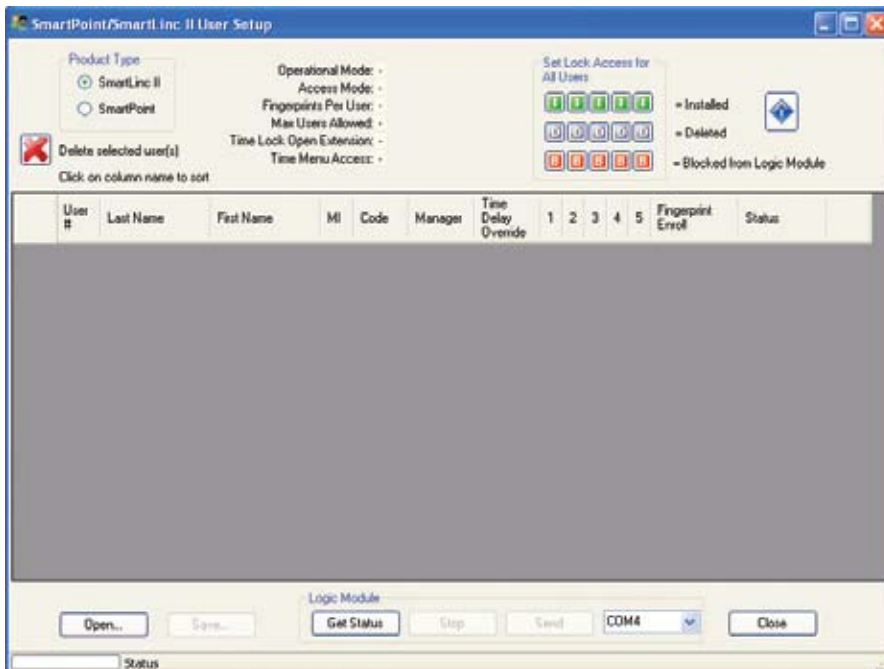
Due to the large number of users and the amount of information being transferred, it is highly recommended that users are managed at the software level when possible. The system cannot accept name information at the Logic Module level. Any Users added at the Logic Module will have their information transferred to the software program when information is retrieved from the Logic Module.

The first time the setup program runs, it will be necessary to connect the Logic Module and retrieve information from the Logic Module. If any users have been setup directly via the Logic Module, that information will be transmitted to the file on screen.

This function requires Logic Module Programming / Audit Cable (P/N 2041)

1. Connect power to the Logic Module. Requires the use of a 9V battery. The use of Quality Energizer e2 Titanium or Duracell Ultra 9-Volt alkaline batteries is recommended.
2. Connect 2041 cable to PC and open SMARTPOINT Set-up software.
3. Plug the 2041 cable into the Logic Module through the port on the keypad.
4. Press any key to power up SMARTPOINT.
 - Display will show **ENTER CODE**.
5. Hold down **zero** until the display shows **MASTER, X-X-X-X-X-X-X**.
6. Enter the MASTER code.
7. Press the **P** button four (4) times to select PC Link. The Logic Module display will show **PC LINK**. Press the **OK** button to start communication with the PC. The Logic Module display will show **PC LINK, ENABLED**.
8. Press the **GET STATUS** button on the software (see screen 48).
 - If the COM port has been incorrectly set, an error message will appear. Return to the setup window (see screen 48), and reset the COM port to the correct one. **Note: If you do not know which COM port to use, check the computer's device manager.**
 - If one or more of the cables isn't properly connected an error message will appear. Check all connections and try again.
9. During the transfer of information, on the lower left side of the screen the status bar will show the information being downloaded (see screen 49).
 - In order to exit from PC Link, press the **P** button seven (7) times. When the screen reads **Do you want to QUIT?**, press the **OK** button to exit.

NOTE: If the computer does not have a serial port, a serial to USB Adapter will be required.



Screen 48



Screen 49

ADDING USERS VIA THE PC SOFTWARE

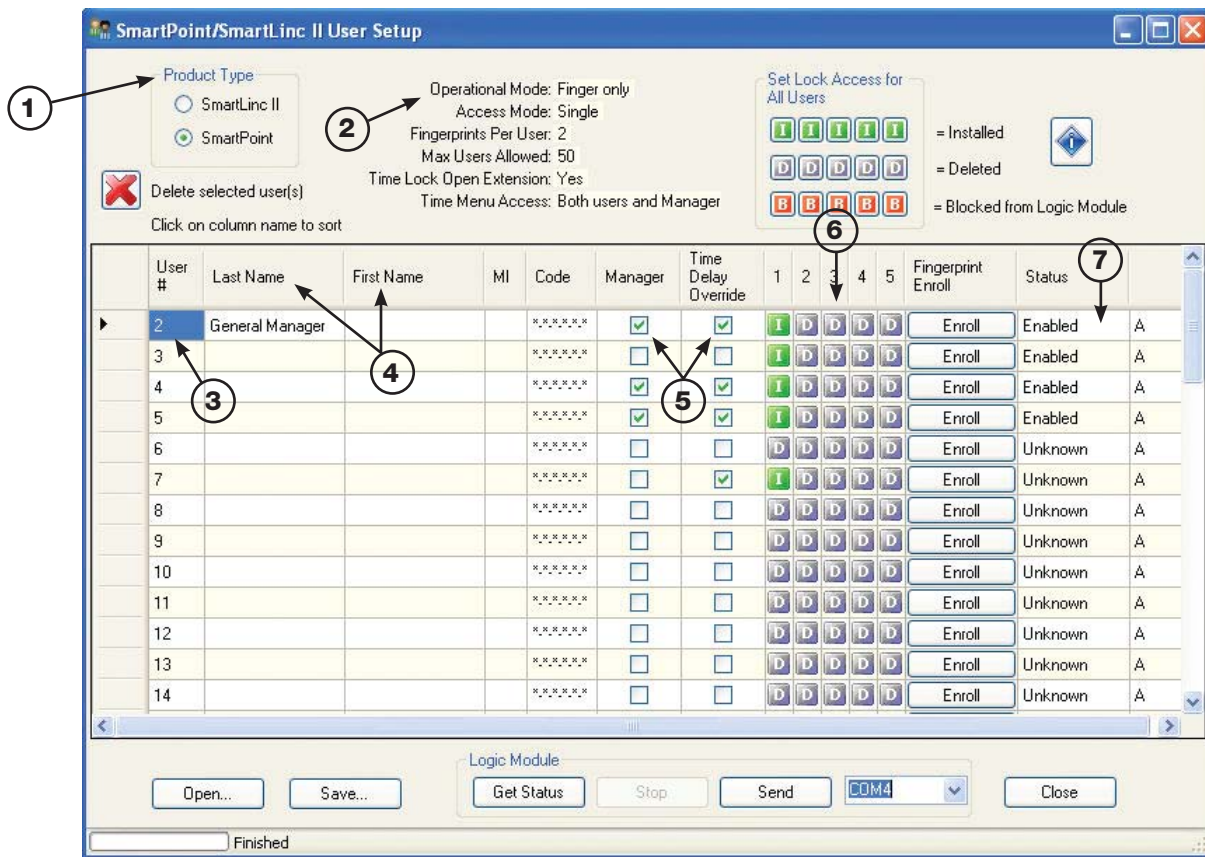
Once information has been transferred from the Logic Module to the software program, new users may be entered and their fingerprints enrolled using the USB fingerprint scanner.

- Select the product type, either SMARTLINC II or SMARTPOINT (see callout 1 on screen 50).
- A listing of information regarding the setup of the Logic Module will be shown on the screen (see callout 2 on screen 50).
- User #2 is always the General Manager. This person, in addition to the Masters, has the ability to add and delete other managers enrolled into the system (see callout 3 on screen 50).
- All users enrolled into the system can be noted by their first and last names (see callout 4 on screen 50).
- The default code for User #2 is 1-1-1-1-1 (see screen 51). This code must be changed prior to User Setup being sent to the unit. If it has not been changed, when the send button is pressed a message box will appear (see screen 54). The setup will not be sent until the code has been changed. All other users, when entered into the system, will require a code of your choosing.

NOTE: If a User Code has not been defined, the software will ask whether the user should automatically be assigned a random code (see screen 52). The code can then be seen by putting the cursor in the Code box (see screen 53).

- Each user enrolled can be selected as a manager or allowed to have Time Delay Override ability. Marking the appropriate box with a checkmark will select these functions (see callout 5 on screen 50).
- User #2 is automatically installed for up to five locks (the maximum this system can manage.) Lock Access may be set as either **Blocked** (no lock with this ID will be enrolled into the system) or **Deleted** (no access to this lock is given at this time, but may be added to this user at a later date through this software or directly at the Logic Module). See callout 6 on screen 50.
- The status column refers to operational mode. The mode selected should match the operational mode shown for the system (see callout 7 on screen 50).

NOTE: To delete users, highlight the row for the user to be deleted then click the "X" delete button.



Screen 50

User #	Last Name	First Name	MI	Code	Manager	Time Delay Override	1	2	3
2	General Manager			11111	<input checked="" type="checkbox"/>	<input checked="" type="checkbox"/>	I	D	D
3				*****	<input type="checkbox"/>	<input type="checkbox"/>	I	D	D
4				*****	<input checked="" type="checkbox"/>	<input checked="" type="checkbox"/>	I	D	D

Screen 51



Screen 52

User #	Last Name	First Name	MI	Code	Manager	Time Delay Override	1	2
2	General Manager			*****	<input checked="" type="checkbox"/>	<input checked="" type="checkbox"/>	I	D
3	Smith	John		565996	<input type="checkbox"/>	<input checked="" type="checkbox"/>	D	D

Screen 53



Screen 54

ENROLLING FINGERPRINTS VIA PC

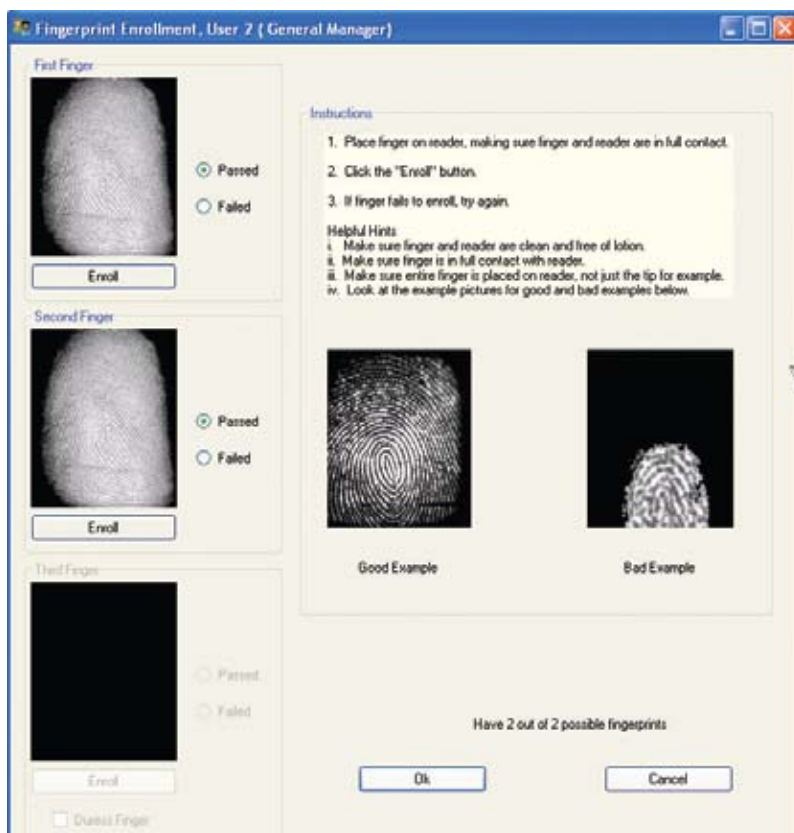
To enroll users via the PC, open the SMARTLINC/SMARTPOINT User Setup Program on the PC. The USB Fingerprint Reader must be plugged into the PC. (For information on installing this hardware, please refer to the software installation guide.)

1. Press the **Enroll** button for the user to be enrolled (see screen 55).
2. Place first finger to be enrolled on the reader, making sure finger and reader are in full contact (see screen 56).
3. Click the Enroll button.
4. Follow steps above for each finger to be enrolled.
 - If fingerprint enrollment fails try again.
5. Place a check mark in the box marked **Duress** if the fingerprint being enrolled will be used as the duress finger.

NOTE: In order for a user to be added in a SMARTPOINT system via the software, their fingerprints must be enrolled. If there are no fingerprints associated with a user an error message will appear(see screen 57), and the information will not be transferred to the Logic Module.

User #	Last Name	First Name	MI	Code	Manager	Time Delay Override	1	2	3	4	5	Fingerprint Enroll	Status
2	General Manager	Mark		*.*.*.*.*	<input checked="" type="checkbox"/>	<input type="checkbox"/>	<input type="checkbox"/>	<input type="checkbox"/>	<input type="checkbox"/>	<input type="checkbox"/>	<input type="checkbox"/>	Enroll	Code
3				*.*.*.*.*	<input type="checkbox"/>	<input type="checkbox"/>	<input type="checkbox"/>	<input type="checkbox"/>	<input type="checkbox"/>	<input type="checkbox"/>	<input type="checkbox"/>	Enroll	Unknown

Screen 55



Screen 56



Screen 57

FINGERPRINT ENROLLMENT LEVEL

Every fingerprint is unique. As such, some fingerprints will be harder to enroll than others. Every fingerprint begins the enrollment process at Level A (see callout 1 on screen 55). After three failed attempts to enroll, the level will automatically drop to B. If a fingerprint cannot be enrolled at Level B either, the user will be identifiable via code only. They will still have to present their fingerprint if the system is setup for fingerprint identification, but no points will be matched.